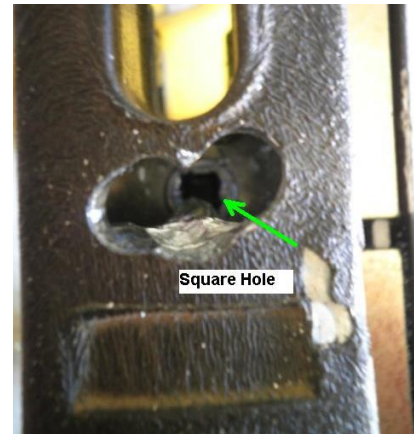
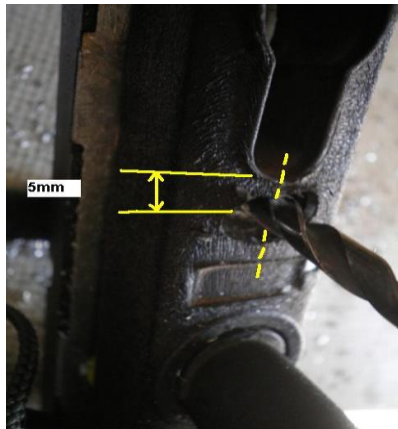




## ATR Locked Door Separating Inner and Outer Door – Removing Barrel

Gaining access to the inner mechanism of the lock in order to separate the inner and outer parts of the door.

1. Using a ¼" bit, drill a hole 5mm down from barrel in line with the center of handle. Then enlarge the hole so that you can clearly see the square-shaped hole on the lock body as shown below.



2. Insert a flat head screw driver into the square hole and turn it. This will separate inner and outer door. Secure the outer door open.



### BRISBANE

11-15 Oasis Court, Clontarf, QLD 4019  
Phone : 07 3284 3284 Fax : 07 3284 5969  
E-mail : [enquiries@aussietraveller.com.au](mailto:enquiries@aussietraveller.com.au)

[www.aussietraveller.com.au](http://www.aussietraveller.com.au)

### MELBOURNE

34-36 Merola Way, Campbellfield VIC  
Ph: 03 9357 6565 Fx: 03 9357 6515  
E-mail: [info@aussietraveller.com.au](mailto:info@aussietraveller.com.au)

100099C1/2



3. Using a large flat head screwdriver and a rag to prevent scratching, pop the lock tongues from the frame.
  - a. Start at the top lock but avoid putting the screwdriver on the black part of the top lock. Just above or below is ideal.
  - b. Use the flex in the van and the door to pop the lock tongue out of the frame.
  - c. Do the same for the middle and bottom lock tongues.
  
4. Remove handle and barrel as per images below



5. If the barrel cannot be removed, then the lug on the barrel is pointing up (yellow in the image below). Drill out along the red line to allow the barrel lug to pass through the hole.

